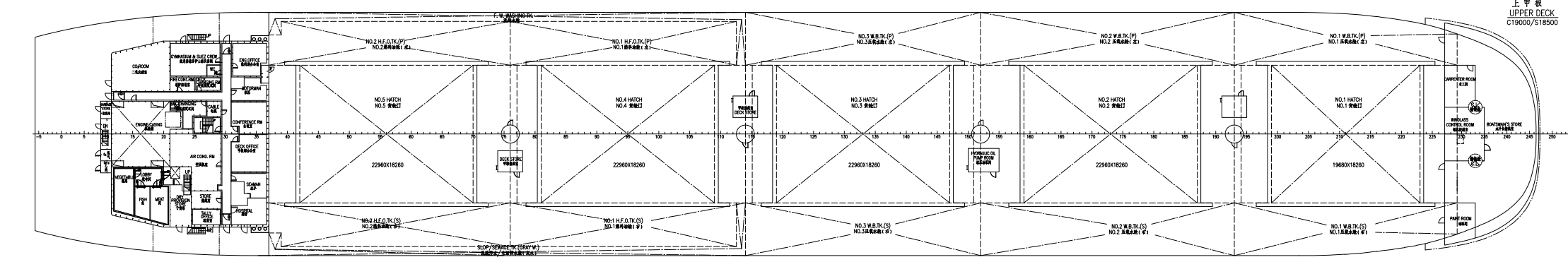


DESCRIPTION	FRAM #	FRAM MAX	INET	WEIGHT	L.C.G.	T.C.G.	V.C.G.
Density=1.025 t/m ³ , Fill=1							
NO.1 CARGO HOLD	193	229	13056.54	13056.54	169.978	-0.000	10.832
NO.2 CARGO HOLD	151	194	17692.44	17692.44	136.610	0.000	10.522
NO.3 CARGO HOLD	114	152	15350.47	15350.47	106.200	-0.000	10.566
NO.4 CARGO HOLD	76	115	15850.41	15850.41	75.522	0.000	10.522
NO.5 CARGO HOLD	37	77	14944.46	14944.46	44.834	0.000	10.952
SUBTOTAL			77784.31	77784.31	106.970	0.000	10.669
Density=0.98 t/m ³ , Fill=0.98							
F.P.T.K.	229	248	1373.04	1407.37	189.314	-0.000	5.441
NO.1 W.B.T.K.P	193	229	1622.85	1663.42	169.708	10.403	7.148
NO.1 W.B.T.K.S	193	229	1839.64	1880.83	168.581	-10.325	7.097
NO.2 W.B.T.K.P	152	193	1834.25	1885.10	138.590	11.320	7.365
NO.2 W.B.T.K.S	152	193	1834.25	1885.10	138.590	-11.320	7.365
NO.3 W.B.T.K.P	114	152	1840.37	1886.38	106.200	11.023	7.041
NO.3 W.B.T.K.S	114	152	1840.37	1886.38	106.200	-11.023	7.041
NO.4 W.B.T.K.P	76	114	1117.32	1145.25	74.218	9.407	1.596
NO.4 W.B.T.K.S	76	114	1117.32	1145.25	74.218	-9.407	1.596
NO.5 W.B.T.K.P	40	76	1051.30	1077.59	43.744	9.952	2.724
NO.5 W.B.T.K.S	40	76	1051.30	1077.59	43.744	-9.952	2.724
A.P.T.K.	-6	14	1714.27	1757.13	2.703	0.000	12.832
SUBTOTAL			19036.30	19497.21	109.330	-0.003	6.371



DESCRIPTION	FRAM #	FRAM MAX	INET	WEIGHT	L.C.G.	T.C.G.	V.C.G.
Density=0.98 t/m ³ , Fill=0.98							
NO.1 H.F.O.T.K.(S)	76	113	460.72	442.47	74.440	13.565	17.229
NO.1 H.F.O.T.K.S	76	113	460.72	442.47	74.440	-12.565	17.229
NO.2 H.F.O.T.K.P	37	76	480.97	461.93	43.811	12.531	17.239
NO.2 H.F.O.T.K.S	37	76	480.97	461.93	43.811	-12.531	17.239
NO.1 H.F.O.SERV.TK.(L.S.)	31	33	19.69	18.91	23.380	-9.502	16.458
NO.1 H.F.O.SERV.TK.(R.S.)	33	35	19.69	18.91	23.380	9.502	16.458
NO.2 H.F.O.SERV.TK.	29	31	19.69	18.91	21.740	-9.502	16.458
NO.2 H.F.O.SERV.TK.	27	29	19.69	18.91	20.100	-9.502	16.458
SUBTOTAL			1962.13	1884.43	57.342	-0.361	17.203
Density=0.85 t/m ³ , Fill=0.98							
M.D.O.T.K.	11	21	114.97	95.77	10.206	-11.910	16.597
LS.M.G.O.STOR.TK.	21	35	137.82	114.80	19.739	-13.111	16.682
M.D.O.SERV.TK.	19	21	15.94	13.28	15.040	-10.700	16.448
LS.M.G.O.SERV.TK.	21	23	16.46	13.71	15.180	-10.730	16.400
SUBTOTAL			285.19	237.56	15.286	-12.354	16.410
Density=0.9 t/m ³ , Fill=0.98							
M/E.L.O.SUMP.TK.	22	33	24.47	21.59	19.690	0.000	0.957
NO.1 C.O.I.L.STOR.TK.	16	16	27.27	24.05	11.093	12.571	12.634
NO.2 C.O.I.L.STOR.TK.(L.TBN.)	14	16	24.43	21.54	9.457	12.403	12.691
M/E.L.O.STOR.TK.	14	16	20.94	18.47	8.440	-7.541	12.150
M/E.L.O.SETT.TK.	14	16	31.17	27.49	9.452	-11.530	12.287
G/E.L.O.STOR.TK.	14	16	10.54	8.30	8.440	8.330	12.150
G/E.L.O.SETT.TK.	14	16	10.40	9.17	9.440	6.741	12.150
SUBTOTAL			149.22	131.81	11.429	1.919	10.520
Density=1.0 t/m ³ , Fill=1							
D.W.T.K.	2	11	156.79	156.79	3.983	10.362	16.859
F.W.T.K.	7	84.44	84.44	2.721	-10.245	16.888	
DISTILLED W.T.K.	7	10	53.90	53.90	5.106	-10.472	16.851
SUBTOTAL			295.13	295.13	3.816	0.661	16.860
Density=1.0 t/m ³ , Fill=1							
COOL.W.T.K.	8	14	33.56	33.56	7.325	0.000	3.730
Density=1.0 t/m ³ , Fill=0.98							
F.W.WASHING.TK.	37	114	364.16	356.88	59.708	15.349	16.340
SLURP.SEWAGE.TK.	37	114	364.16	356.88	59.708	-15.349	16.340
SEWAGE.HOLD.TK.	25	29	57.83	56.67	19.368	11.845	8.392
BILGE.WATER.TK.	27	40	60.74	59.53	26.051	3.137	1.161
L.O.DRAIN.TK.	25	27	2.30	2.25	18.517	3.088	1.431
F.O.OVERF.TK.	36	40	28.37	27.80	28.218	-3.274	1.100
F.O.DRAIN.TK.	27	27	2.30	2.25	18.517	3.088	1.431
S/T.LO.SUMP.TK.	14	16	6.51	6.38	9.559	-0.118	1.231
SLUDGE.TK.	27	36	32.38	31.73	24.171	-3.018	1.215
FO.PURIFIER.SLUDGE.TK.	32	36	6.17	6.01	25.020	-0.141	9.700
LO.PURIFIER.SLUDGE.TK.	30	32	4.11	4.03	22.560	-12.330	9.700
SUBTOTAL			937.03	912.41	91.789	0.562	13.599

NOTE:
1. T.C.G. (-) STARBOARD SIDE (+) PORT SIDE
2. ORIGINAL COORDINATE OF L.C.G. IS LOCATED AT FRAME 0 (A.P.)

主要尺度及数据
PRINCIPAL DIMENSIONS

总长 LENGTH O.A.	199.90 m
船体总长 LENGTH B.P.	194.50 m
总宽 BREADTH M.L.D.	32.26 m
总深 DEPTH M.L.D.	18.50 m
设计吃水 DESIGNED DRAFT	11.30 m
结构吃水 SCANTLING DRAFT	13.30 m
结构吃水重量 DEADWEIGHT AT SCANTLING DRAFT	63,083 t
船级 CLASSIFICATION (LR - 100A1 Bulk Carrier, CSR-BC-A, Holds No.2&4 may be empty)	
船级社 LMC(LINE), with the descriptive notes: ShipRight (SERV, SCM), ENRMS (A-F, J)	
IMO # IMO NUMBER	9737357

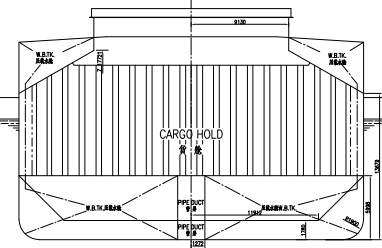
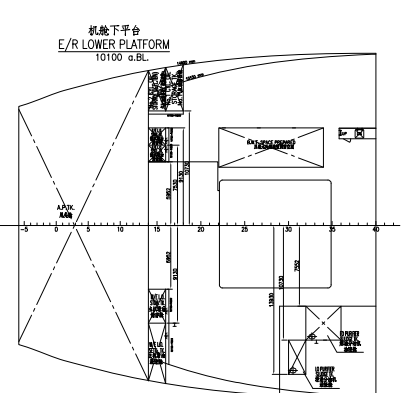
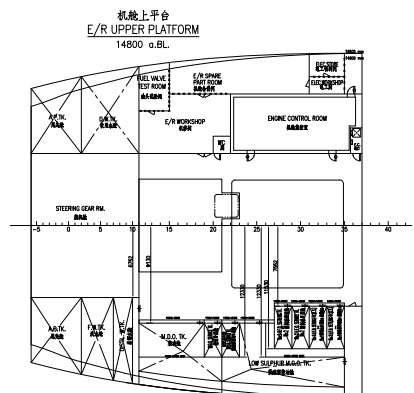
ASSOCIATED DOCUMENT

IMO Number: 9737357
This document is to be used in conjunction with the Item 6 Stability Instruction.
approved on: 18 August 2015
Date: 18 August 2015 Initial: W001
Marine, Shanghai Technical Support Office
Statutory Section
Shanghai Register Classification Society China Co Ltd

FINAL DESIGN 竣工设计	63,500DWT BULK CARRIER 63,500 吨散货船	SC4622(HT)G2-103-02
-------------------	---------------------------------------	---------------------

CURRENT REVISION	A	DIMENSION CHANGES	S	CAPACITY PLAN	HULL NO.: HT64-124
制图	王智	审核	王智	比例	1:250
设计	王智	校对	王智	图号	1/1
校核	王智	日期	2015.08	面积	1,250 m ²

This drawing and the information contained in the exclusive property of SDARI and must not be copied or handed over to third parties without our written permission.
本图及所含信息均为上海船舶研究设计院(SDARI)的专有财产, 未经许可, 不得复制或转交给任何第三方。



LOADING SCALE (1:100)

Deck	Length	Width	Height	Volume
NO.1	100.00	32.26	18.50	591.00
NO.2	100.00	32.26	18.50	591.00
NO.3	100.00	32.26	18.50	591.00
NO.4	100.00	32.26	18.50	591.00
NO.5	100.00	32.26	18.50	591.00