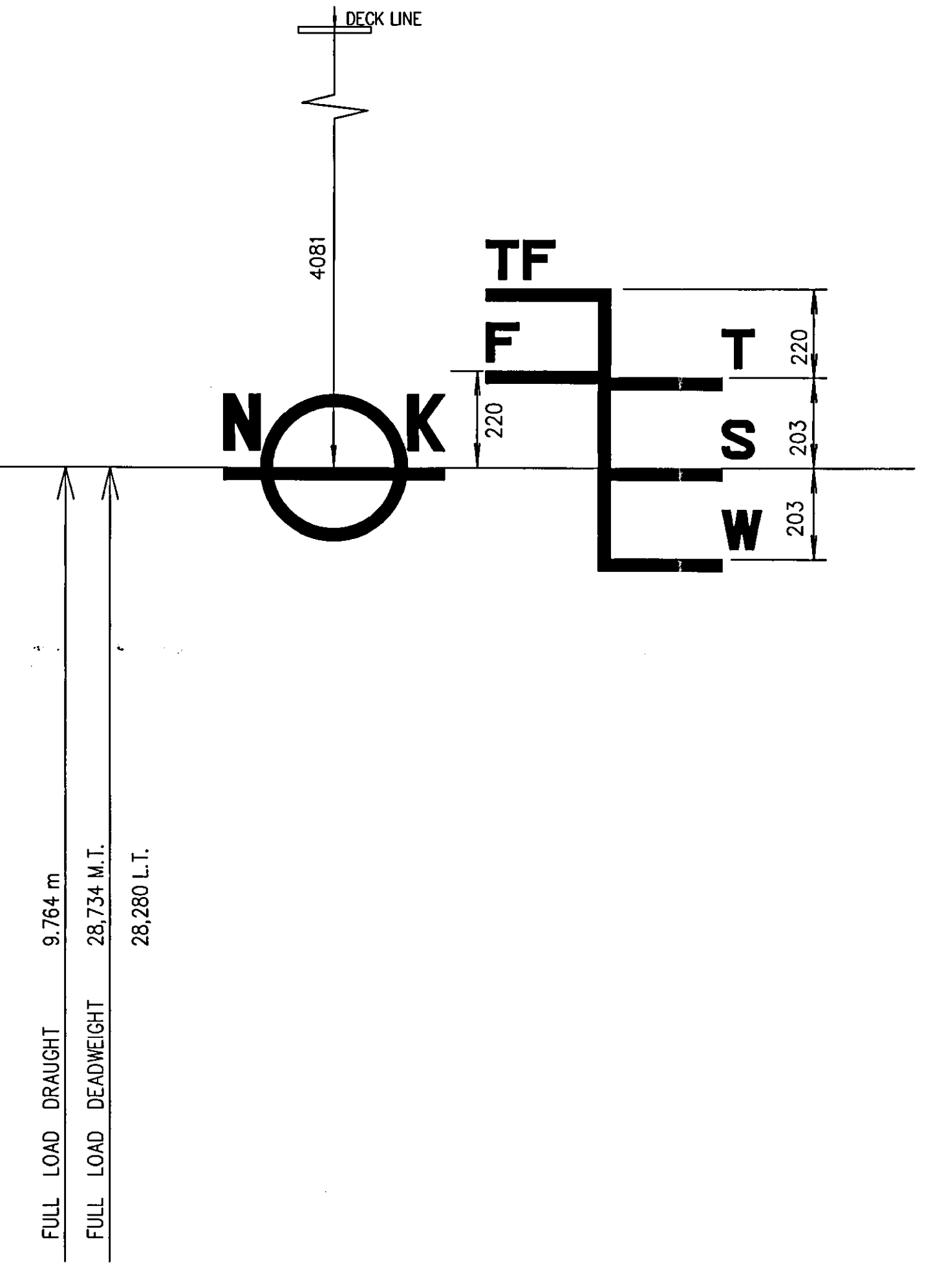
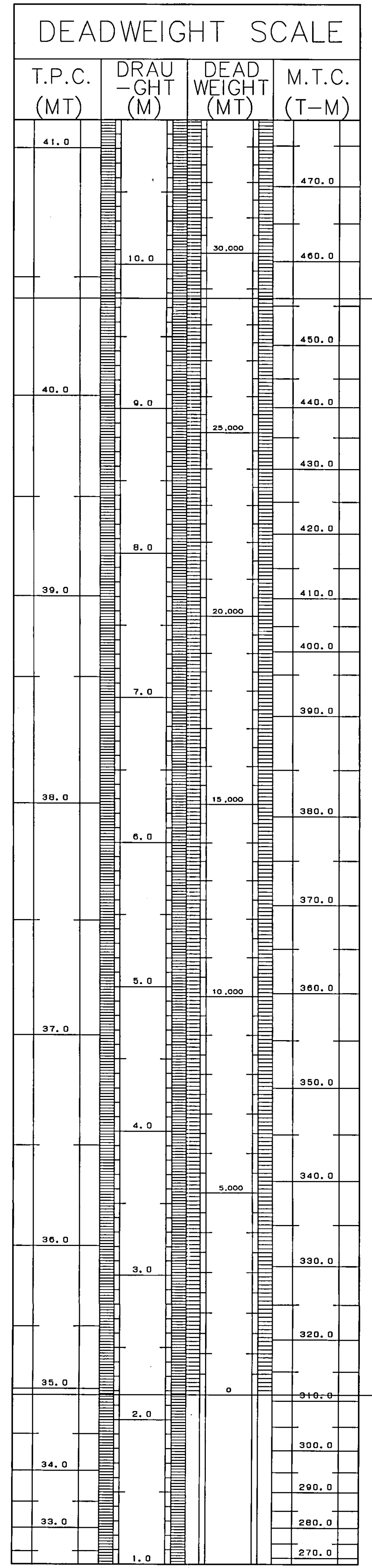


CAPACITY PLAN WITH DEADWEIGHT SCALE

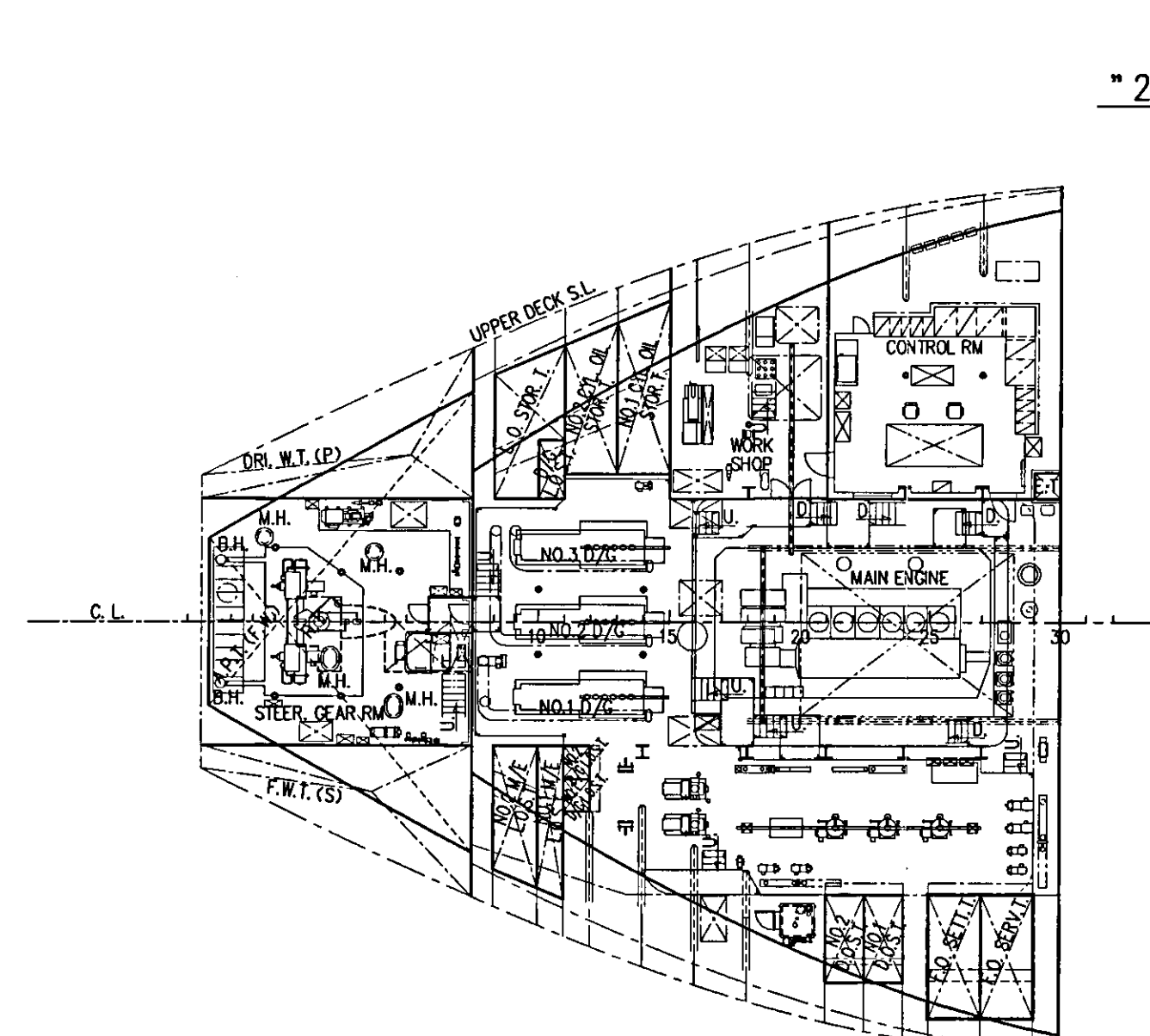
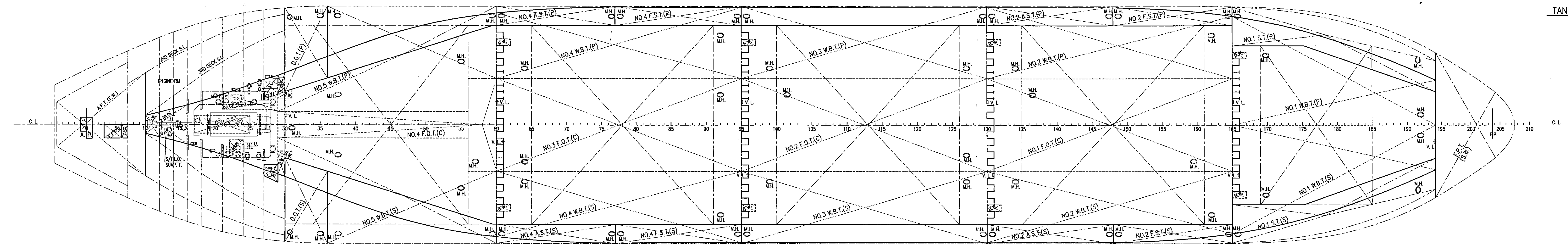
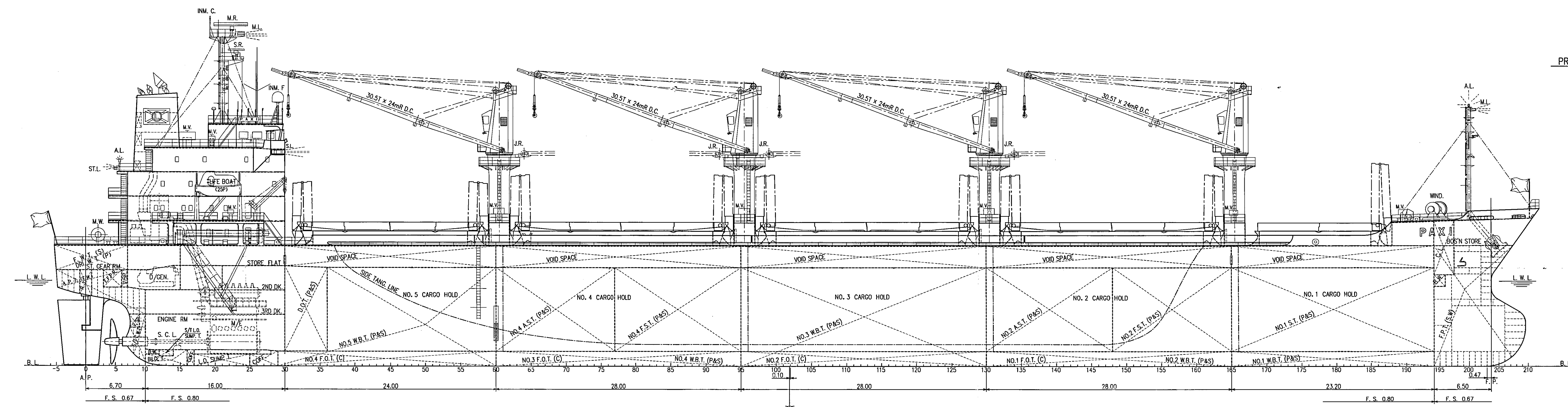
M.V. PAXI



FREEBOARD TABLE

LOAD LINE	MARK	FREEBOARD (mm)	DRAUGHT (m)	DEADWEIGHT (M.T.)	DEADWEIGHT (L.T.)
TROPICAL FRESH WATER	TF	3,658	10.187	29,535	29,069
FRESH WATER	F	3,561	9,984	28,730	28,776
TROPICAL	T	3,878	9,967	29,552	29,085
SUMMER	S	4,081	9,764	28,734	28,280
WINTER	W	4,284	9,561	27,914	27,473
WINTER NORTH ATLANTIC	WNA	4,284	9,561	27,914	27,473

LIGHT CONDITION



* CARGO HOLD (GRAIN) EQUIVALENT USED : 1m³ = 35,315 CF

NAME	POSITION	CAPACITY	KG	KG
NO.1 CARGO HOLD	HOLD	165.5-194	4,517.31	159,528.80
NO.1 CARGO HOLD	HATCH WAY	169-185	387.84	13,696.57
NO.2 CARGO HOLD	HOLD	135-161	7,877.02	277,113.96
NO.2 CARGO HOLD	HATCH WAY	130.5-165.5	792.84	28,002.68
NO.3 CARGO HOLD	HOLD	95.5-130.5	7,206.36	254,000.69
NO.3 CARGO HOLD	HATCH WAY	100-126	792.84	28,002.68
NO.4 CARGO HOLD	HOLD	60.5-95.5	7,691.91	271,639.80
NO.4 CARGO HOLD	HATCH WAY	65-91	792.84	28,002.68
NO.5 CARGO HOLD	HOLD	30-60.5	6,151.06	217,224.68
NO.5 CARGO HOLD	HATCH WAY	34-56	670.87	23,691.77
TOTAL	SUM		6,821.93	240,916.45

* CARGO HOLD (BALE) EQUIVALENT USED : 1m³ = 35,315 CF

NAME	POSITION	CAPACITY	KG	KG
NO.1 CARGO HOLD	HOLD	165.5-194	4,186.86	147,858.96
NO.1 CARGO HOLD	HATCH WAY	169-185	387.84	13,696.57
NO.2 CARGO HOLD	HOLD	135-161	7,282.63	257,186.08
NO.2 CARGO HOLD	HATCH WAY	130.5-165.5	792.84	28,002.68
NO.3 CARGO HOLD	HOLD	95.5-130.5	7,282.63	257,186.08
NO.3 CARGO HOLD	HATCH WAY	100-126	792.84	28,002.68
NO.4 CARGO HOLD	HOLD	60.5-95.5	8,075.57	285,188.76
NO.4 CARGO HOLD	HATCH WAY	65-91	792.84	28,002.68
NO.5 CARGO HOLD	HOLD	30-60.5	5,928.40	209,396.76
NO.5 CARGO HOLD	HATCH WAY	34-56	670.87	23,691.77
TOTAL	SUM		35,401.68	1,250,210.34

* WATER BALLAST TANK (100% FULL) SG : 1.025

NAME	POSITION	CAPACITY	WEIGHT	KG	KG
FORE PEAK TANK	C	194-194	817.75	838.19	-77.05
NO.1 W. B. T.	P	165-194	318.18	326.13	-60.36
NO.2 W. B. T.	S	165-194	317.71	325.85	-60.38
NO.3 W. B. T.	P	130-165	338.28	346.74	-36.23
NO.4 W. B. T.	S	130-165	338.28	346.74	-36.23
NO.5 W. B. T.	P	95-130	930.51	953.77	-8.52
NO.6 W. B. T.	S	95-130	930.51	953.77	-8.52
NO.7 W. B. T.	P	60-95	336.78	345.20	19.13
NO.8 W. B. T.	S	60-95	336.78	345.20	19.13
NO.9 W. B. T.	P	29-60	691.96	709.26	43.85
NO.10 W. B. T.	S	29-60	691.96	709.26	43.85
NO.11 W. B. T.	P	165-194	583.66	598.25	-60.22
NO.12 W. B. T.	S	165-194	583.66	598.25	-60.22
NO.13 W. B. T.	P	148-165	272.83	279.65	-43.55
NO.14 W. B. T.	S	148-165	272.83	279.65	-43.55
NO.15 W. B. T.	P	130-148	299.28	306.76	-29.70
NO.16 W. B. T.	S	130-148	299.28	306.76	-29.70
NO.17 W. B. T.	P	77-95	299.27	306.75	12.70
NO.18 W. B. T.	S	77-95	299.27	306.75	12.70
NO.19 W. B. T.	P	60-77	280.85	287.87	26.68
NO.20 W. B. T.	S	60-77	280.85	287.87	26.68
TOTAL			9,520.48	9,758.47	

* FRESH WATER TANK (100% FULL) SG : 1.000

NAME	POSITION	CAPACITY	WEIGHT	KG	KG
FRESH WATER T.	S	AE-7	46.58	46.58	78.24
AFT PEAK TANK	C	AE-10	164.83	164.83	77.67
DRINK WATER T.	P	AE-7	46.58	46.58	78.24
TOTAL			257.99	257.99	

* FUEL OIL TANK (100% FULL) SG : HEAVY O-0.990 DIESEL O-0.880

NAME	POSITION	CAPACITY	WEIGHT	KG	KG
NO.1 FUEL OIL T.	C	130-165	496.31	486.38	-36.53
NO.2 FUEL OIL T.	C	95-130	496.31	486.38	-36.53
NO.3 FUEL OIL T.	C	60-95	495.29	485.36	19.45
NO.4 FUEL OIL T.	C	29-60	166.54	163.21	43.24
SUM			1,654.45	1,621.35	
DIESEL OIL T.	P	30-36	139.53	122.79	55.12
DIESEL OIL T.	S	30-36	139.53	122.79	55.12
SUM			279.06	245.58	
TOTAL			1,933.51	1,866.93	

* LUBRICATING OIL TANK (100% FULL) SG : 0.920

NAME	POSITION	CAPACITY	WEIGHT	KG	KG
L. O. SUMP T.	C	17-25	15.38	14.15	64.68
S/T L. O. S. T.	C	12-14	1.84	1.51	71.07
TOTAL			17.02	15.66	

* OTHER TANK (100% FULL)

NAME	POSITION	CAPACITY	WEIGHT	KG	KG
BILGE BLUDGE T.	P	21-29	15.53	61.24	1.12
DRAIN T.	S	22-24	3.32	63.06	1.18
BILGE T.	C	10-16	14.83	70.46	0.98
S/T C. W. T.	C	4-10	8.00	74.15	3.02

PRINCIPAL PARTICULARS

LENGTH (O.A.)	169.54 m
LENGTH (B.P.)	160.40 m
BREADTH (M.D.)	27.20 m
DISTN (M.D.)	13.85 m
DRAUGHT (EXT.)	9.764 m
DEADWEIGHT	28,734 MT
GROSS TONNAGE (I.C.T.M. 1989)	18,096
NET TONNAGE (I.C.T.M. 1989)	9,649
MAN ENGINE	
WARTSILA-VALEN	B & W ES43MC (MARK 7) x 1 set
MAXIMUM OUTPUT	6,480 kw x 136 rpm
NORMAL OUTPUT	5,510 kw x 129 rpm
HOLD CAPACITY (GRAIN)	37,181.15 m³
HOLD CAPACITY (BALE)	35,401.68 m³
SPEED	
TRIAL WAX	16.185 knots
SERVICE SPEED on the design loaded draught (18.0m moulded) at N.O.R. with 100% S.M.	abt. 14.2 knots
CLASS	NIPPON KAIYU KEN (NK)
CLASSIFICATION CHARACTERS	NS (BAK CARRIER MODIFIED) and MNS
INSTALLATION CHARACTERS	CHS, MPP, LSA, RCF, AFS
DESCRIPTIVE NOTE	DOUBLE HULL CONSTRUCTION APPLIED TO ALL CARGO HOLDS
SERVICE AREA	OCEAN GOING
PORT OF REGISTRY	MAJURO

COMPLEMENT

DECK PART	ENGINE PART	BUSINESS PART
CAPTAIN	1 CHIEF ENGINEER	1 BUSINESS PART
CHIEF OFFICER	1 1ST ENGINEER	1 BUSINESS PART
2ND OFFICER	1 2ND ENGINEER	1 BUSINESS PART
3RD OFFICER	1 3RD ENGINEER	1 BUSINESS PART
BOATSWAIN	1 NO.1 OILER	1 CHIEF COOK
ABLE SEAMAN	3 OILER	3 MESS MAN
TOTAL NUMBER OF CREW CLASS	13	8 P.
TOTAL NUMBER OF CREW CLASS		13 P.
OFFICER'S SPARE (JUNIOR OFFICER CLASS)		2 P.
CREW'S SPARE (RATING CREW CLASS)		1 P.
OFFICER'S SPARE (PILOT)		1 P.
GRAND TOTAL		25 P.

M.V. PAXI
HOKI Basic Part 1/1
CODE C-0300
A/A: 3

CAUTION
THIS DRAWING OR DOCUMENT IS THE PROPERTY OF IMABARI SHIPBUILDING CO., LTD.
REPRODUCING, COPYING, UTILIZATION FOR PURPOSES OTHER THAN AGREED, DISCLOSE TO A THIRD PARTY, ARE STRICTLY SUBJECT TO PRIOR WRITTEN AGREEMENT BY IMABARI SHIPBUILDING CO., LTD.

FINISHED PLAN

CON. FERRED	IMABARI DESIGN GROUP
DESIGNED	IMABARI DESIGN GROUP
CHECKED	IMABARI DESIGN GROUP
APPROVED	IMABARI DESIGN GROUP
SCALE	SCALE
CLASS	CLASS
DWG. NO.	DWG. NO.
C-0300	C-0300

IMABARI SHIPBUILDING CO., LTD. IMABARI SHIPBUILDING CO., LTD. DATE: April 30, 2010