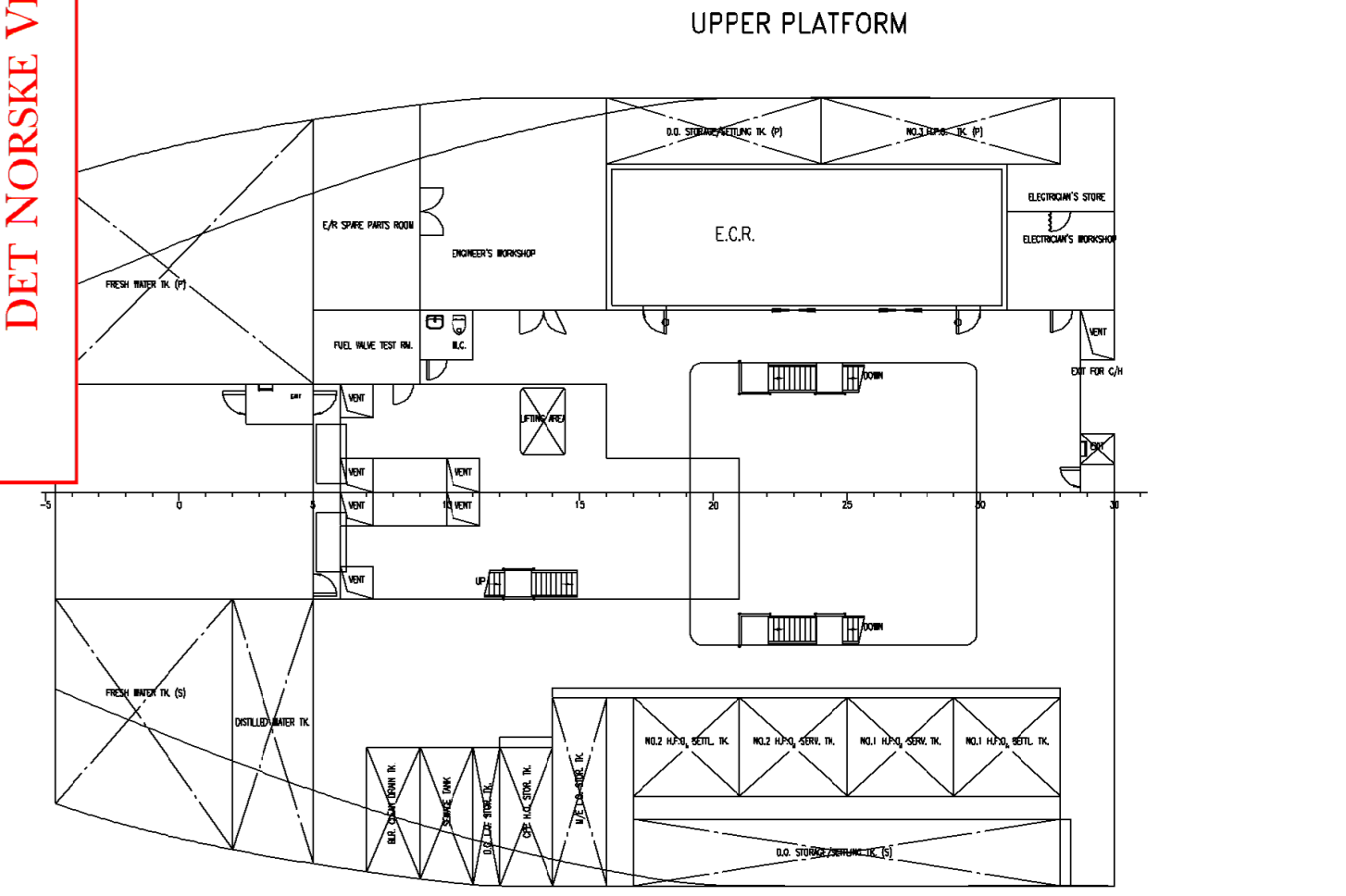


NAME	DES	VOLM m <sup>3</sup>	VNET m <sup>3</sup>	L.C.G. m	T.C.G. m	V.C.G. m	IMAX m <sup>4</sup>
<b>Cargo : Reduction=0.005</b>							
R1.01	NO.1 CARGO HOLD	5016.36	4991.28	160.274	-0.000	8.505	13162.46
R1.02	NO.2 CARGO HOLD	7094.01	7058.54	137.850	0.000	8.653	20213.15
R1.03	NO.3 CARGO HOLD	7089.49	7054.04	112.362	0.000	8.444	20326.67
R1.04	NO.4 CARGO HOLD	7088.33	7052.89	86.613	0.000	8.445	20326.67
R1.05	NO.5 CARGO HOLD	7089.49	7054.04	61.162	0.000	8.444	20326.68
R1.06	NO.6 CARGO HOLD	5927.68	5899.54	38.072	0.000	8.959	19214.89
<b>SUBTOTAL</b>		<b>39005.36</b>	<b>38810.33</b>	<b>98.454</b>	<b>0.000</b>	<b>8.679</b>	
<b>Water Ballast : Reduction=0.02</b>							
R2.0	F.P.T.K.	849.42	832.43	176.155	-0.025	3.485	3056.92
R2.01SP	NO.1 B.W.B.T.K.P.	258.69	253.52	160.315	4.161	0.854	878.18
R2.01S	NO.1 B.W.B.T.K.S	258.69	253.52	160.315	-4.161	0.854	878.18
R2.01SP	NO.1 S.W.B.T.K.P.	550.07	539.07	160.804	9.923	8.392	226.67
R2.01S	NO.1 S.W.B.T.K.S	550.07	539.07	160.804	-9.923	8.392	226.67
R2.02SP	NO.2 B.W.B.T.K.P.	344.68	337.79	138.400	5.160	0.850	1059.83
R2.02S	NO.2 B.W.B.T.K.S	344.68	337.79	138.400	-5.160	0.850	1059.83
R2.02SP	NO.2 S.W.B.T.K.P.	615.23	602.93	138.379	10.836	7.118	52.03
R2.02S	NO.2 S.W.B.T.K.S	615.23	602.93	138.379	-10.836	7.118	52.03
R2.03SP	NO.3 B.W.B.T.K.P.	344.68	337.79	112.800	5.160	0.850	1059.83
R2.03S	NO.3 B.W.B.T.K.S	344.68	337.79	112.800	-5.160	0.850	1059.83
R2.03SP	NO.3 S.W.B.T.K.P.	616.43	604.10	112.800	10.836	7.105	52.03
R2.03S	NO.3 S.W.B.T.K.S	616.43	604.10	112.800	-10.836	7.105	52.03
R2.04SP	NO.4 S.W.B.T.K.P.	616.43	604.10	87.200	10.836	7.105	52.03
R2.04S	NO.4 S.W.B.T.K.S	616.43	604.10	87.200	-10.836	7.105	52.03
R2.05SP	NO.5 S.W.B.T.K.P.	509.85	499.66	61.602	10.936	8.402	52.03
R2.05S	NO.5 S.W.B.T.K.S	509.85	499.66	61.602	-10.936	8.402	52.03
R2.06SP	NO.6 S.W.B.T.K.P.	209.82	205.62	40.178	4.487	0.890	594.07
R2.06S	NO.6 S.W.B.T.K.S	209.82	205.62	40.178	-4.487	0.890	594.07
R2.06SP	NO.6 S.W.B.T.K.P.	522.25	511.81	37.465	10.292	7.282	174.84
R2.06S	NO.6 S.W.B.T.K.S	522.25	511.81	37.465	-10.292	7.282	174.84
R2.07	A.P.T.K.	460.20	450.99	3.510	0.000	9.637	4612.56
<b>SUBTOTAL</b>		<b>10485.91</b>	<b>10276.19</b>	<b>106.802</b>	<b>-0.043</b>	<b>5.824</b>	
<b>Heavy Fuel Oil : Reduction=0.02</b>							
R3.1P	NO.1 H.F.O. STOR. T.K.P.	344.68	337.79	87.200	5.160	0.850	1059.83
R3.1S	NO.1 H.F.O. STOR. T.K.S	344.68	337.79	87.200	-5.160	0.850	1059.83
R3.2P	NO.2 H.F.O. STOR. T.K.P.	445.04	436.14	61.779	6.324	0.867	2529.55
R3.2S	NO.2 H.F.O. STOR. T.K.S	445.04	436.14	61.779	-6.324	0.867	2529.55
R3.3	NO.3 H.F.O. STOR. T.K.	96.16	94.24	22.842	10.791	10.514	4.66
R3.4	NO.4 H.F.O. STOR. T.K.	27.28	26.74	18.400	-7.650	12.450	6.78
R3.5	NO.5 H.F.O. STOR. T.K.	27.28	26.74	18.400	-7.650	12.450	6.78
R3.6	NO.6 H.F.O. STOR. T.K.	27.28	26.74	24.800	-7.650	12.450	6.78
R3.7	NO.7 H.F.O. STOR. T.K.	27.28	26.74	18.400	-7.650	12.450	6.78
<b>SUBTOTAL</b>		<b>1784.73</b>	<b>1749.03</b>	<b>66.920</b>	<b>0.114</b>	<b>2.089</b>	
<b>Diesel Oil : Reduction=0.02</b>							
R4.1P	D.O. STORAGE/SETTLING T.K.P.	69.58	68.19	16.232	10.894	10.979	4.14
R4.1S	D.O. STORAGE/SETTLING T.K.S	74.98	73.48	15.637	-10.808	12.505	8.80
R4.2	D.O. SERV. T.K.	19.03	18.65	17.661	-10.705	8.508	4.46
<b>SUBTOTAL</b>		<b>163.59</b>	<b>160.32</b>	<b>17.959</b>	<b>-1.591</b>	<b>11.391</b>	
<b>Lubricating Oil : Reduction=0.02</b>							
R5.1	M/E L.O. STOR. T.K.	24.22	23.75	12.005	-8.887	12.529	23.67
R5.2	NO.1 C.Y.L.O. STOR. T.K.	28.91	28.33	14.034	-8.358	8.479	24.41
R5.3	NO.2 C.Y.L.O. STOR. T.K.	22.26	21.81	11.115	-8.178	8.615	14.62
R5.4	S/T L.O. STOR. T.K.	6.63	6.50	12.000	-6.220	8.400	0.45
R5.5	D.O. L.O. STOR. T.K.	7.79	7.64	9.203	-9.415	12.576	4.66
R5.6	D.G. RENOVATING O.T.K.	5.80	5.69	26.300	3.220	8.400	0.38
R5.7	M/E L.O. DR. T.K.	14.74	14.44	18.800	0.000	0.955	6.99
<b>SUBTOTAL</b>		<b>110.35</b>	<b>108.14</b>	<b>13.818</b>	<b>-6.701</b>	<b>8.676</b>	
<b>Cooling water : Reduction=0.02</b>							
R6.3	COOLING W.T.K.	25.48	24.97	6.970	0.000	3.825	88.76
<b>SUBTOTAL</b>		<b>25.48</b>	<b>24.97</b>	<b>6.970</b>	<b>0.000</b>	<b>3.825</b>	<b>88.76</b>
<b>Fresh Water : Reduction=0.02</b>							
R6.1P	FRESH WATER T.K.P.	168.76	165.38	0.389	6.218	13.105	239.00
R6.1S	FRESH WATER T.K.S	109.52	107.33	-0.823	-6.445	13.129	146.57
R6.2	DISTILLED WATER T.K.	59.24	58.05	2.818	-6.538	13.060	91.03
<b>SUBTOTAL</b>		<b>337.52</b>	<b>330.77</b>	<b>0.389</b>	<b>-0.000</b>	<b>13.105</b>	
<b>Miscellaneous : Reduction=0.02</b>							
R7.01	H.F.O. OVERFLOW T.K.	50.79	49.78	24.990	1.038	1.226	602.20
R7.02	D.O. OVERFLOW T.K.	20.68	20.27	22.851	9.055	4.900	9.23
R7.03	F.O. WASTE T.K.	12.99	12.75	18.582	3.502	2.316	17.68
R7.04	L.O. WASTE T.K.	13.19	12.82	22.271	-3.303	1.593	9.68
R7.05	D.G. RENOVATING O.T.K.	2.90	2.84	26.300	2.110	8.400	0.05
R7.06	F.O. PURIFIED SLUDGE T.K.	11.75	11.51	24.000	-7.190	6.435	4.38
R7.07	L.O. PURIFIED SLUDGE T.K.	11.75	11.51	19.200	-7.190	6.435	4.38
R7.08	BILGE W. SETT.L.T.K.	36.94	36.20	24.104	-7.286	4.153	4.38
R7.09	M/E DRY D. T.K.	13.47	13.20	18.609	0.000	0.371	7.62
R7.10	C.P.P. H.O. STOR. T.K.	16.55	16.22	10.410	-9.519	12.562	9.27
R7.11	C.P.P. DR. T.K.	2.22	2.17	12.889	-1.499	1.264	0.18
R7.12	BILGE W. T.K.	27.60	27.05	11.501	-0.054	1.109	21.68
R7.13	S/T L.O. DR. T.K.	4.39	4.30	8.793	0.336	0.869	2.36
R7.14	M/E C.Y.L.O. DR. T.K.	4.68	4.58	8.032	-2.319	1.484	1.22
R7.15	SEWAGE TANK	14.49	14.20	8.014	-9.299	12.592	7.47
R7.16	BLR. CLEAN DRAIN T.K.	12.64	12.47	17.000	-9.900	12.620	6.04
<b>SUBTOTAL</b>		<b>257.56</b>	<b>252.42</b>	<b>18.873</b>	<b>-2.392</b>	<b>4.451</b>	

USED FOR INFORMATION  
 NOT SUBJECT TO APPROVAL  
 Date: 2007-04-29  
 DET NORSE VERITAS AS



PRINCIPAL PARTICULARS

LENGTH O.A. obt. 150.00 m

LENGTH B.P. obt. 152.60 m

BREADTH MLD. 23.60 m

DEPTH MLD. obt. 14.60 m

FREEBOARD DRAFT 10.10 m

MAX. AIR DRAFT (at light ballast, FW.in arrival) 35.50 m

NO.	DATE	DESCRIPTION	BY	CHECKED
1	2007-04-29	ISSUED FOR APPROVAL		

SC4447-103-02

CAPACITY PLAN

容积图